

OTP-NVP1000C

PenCam Recorder

User Manual



NIGHT VISION

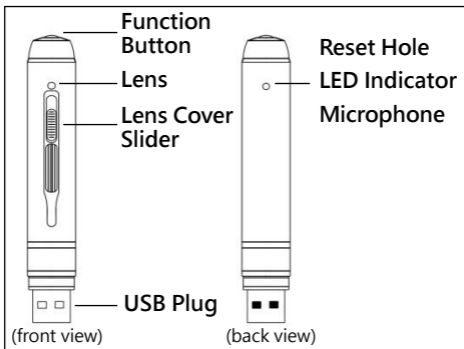
SUPER HD
2304x1296

H.264
MPEG-4/AVC

PenCam Features

- Night vision technology for low illumination video recording, quick light response
- Super HD 1296P @ 30fps
- H.264 compression
- Built-in micro SD card, support up to 128GB
- Only one button, easy operation
- ultra-integrated pen type design, suitable for meeting recording, evidence recording, and outdoor sports scenes, etc.
- Easy download to PC/MAC with USB plug

PenCam Layout



Main Operations

1. Powering the PenCam On/Off

To power on the PenCam press and hold the top Function Button until the blue indicator light appears. After a few seconds the green light will flicker several times and then turn off, the PenCam will automatically begin recording video.

To turn off the PenCam push and hold the top button until the light turns off.

2. Recording Video

(1).Power on the PenCam as in step 1. When first turned on the PenCam will automatically begin recording video.

(2).Push the top button to stop a recording, the blue light turns on and the PenCam is in standby mode.

(3).Push the top button again to begin another recording.

The video streaming is divided into one file every 10 minutes.

NOTE: Be sure to open the lens cover before recording.

3. Taking Photo

(1). To enter the photo mode, make sure the PenCam is in standby mode (the blue light is solid on), double-click the top Function button, the PenCam will go into the photo mode and the blue and green light will blink alternately.

(2). Click the top button once to take a picture, the blue light will blink twice.

(3). To quit the photo mode, double-click the top button again, the PenCam will back to standby mode, the blue light keeps on.

4. Recording Audio

(1). To enter the audio recording mode, make sure the PenCam is in standby mode (the blue light is solid on), Click the top Function button 3 times quickly, the blue light will blink several times and then turn off, the PenCam will automatically begin audio recording.

(2). To stop/quit audio recording mode, just click the top button once, the PenCam will back to

standby mode, the blue light keeps on.

5. Motion Detection

(1). To enter the motion detection recording mode, make sure the PenCam is in standby mode(the blue light is solid on), Click the top Function button 4 times quickly, the green light will blink, the PenCam entered motion detection mode. When the object is moving in front of lens, the PenCam will start video recording automatically, green light blink faster. When the object stop moving, after a few seconds, the PenCam will stop recording. When the disk space is full, it will cut the earliest recorded file, to free space for new video file.

(2). Click the top button once, will pause motion detecting, and the green light will keep on.

(3). To quit motion detection mode, again click the top button 4 times quickly and continuously, the PenCam will back to standby mode, the blue light keeps on.

6. Auto Power Off

(1). When the battery power is low, the blue

light will blink for seconds, and then the PenCam will shut down.

(2). When the memory is full, both the blue and green light will blink for seconds, and then the PenCam will shut down.

(3). If no operation for two minutes in standby mode, the PenCam will shut down.

7. Charging the Battery

The PenCam has an internal battery. The battery can be charged by following ways:

(1). Plug the PenCam into your computer USB port.

(2). Plug the PenCam to DC 5V adapter.

If the blue light is flashing, that means the PenCam is in charge.

Please wait for the blue light stopping flashing (keeping solid on), which means the PenCam is full of power.

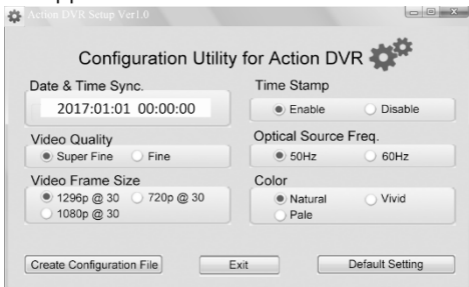
8. Reset

When the PenCam works abnormal, you can try

to reset it. Use a thin needle (or toothpick) to press the Reset button inside the Reset hole. Restart the PenCam, it may work normally.

9. Setting the PenCam

Plug the PenCam into the computer USB port, a new removable disk will appear on the computer screen. Open the removable disk, you will find the file *setup.exe* under the root directory, double-click the file to run it, following window will appear:



You can set date/time, frame size, video quality, etc. After finishing changing, click the button Create configuration file on the lower left to save the

settings. Click the button Default Setting to restore the factory default Settings.

After safely removing the PenCam from the computer and turn on the PenCam, the settings will take effect.

Specifications:

View Angle :	65°
Min. Illumination :	0.1 Lux
Video Format :	MOV
Compress Format:	H.264 advanced version
Vedio Resolution :	2304x1296 1920x1080 1280x720
Frame Rate :	1296P/1080P @30fps 720P @30fps
Photo Format :	JPG 4352x3264
Storage:	Micro SD up to 128GB
USB Interface :	USB 2.0
Battery Charge :	DC 5V/500mA
Battery Capacity:	380mAH
Dimension :	Length:155mm diameter : 15mm
Net Weight :	50 g

Caution:

Your PenCam is a product of superior design and craftsmanship and should be treated with care.

- The PenCam may become fairly hot during recording – this is normal. To ensure proper cooling do not block the flow of air to the cover of the PenCam.
- Keep the PenCam dry. Precipitation, humidity, and all types of liquids or moisture can contain minerals that will corrode electronic circuits. If your PenCam does get wet, allow it to dry completely.
- Do not drop, or knock the PenCam. Rough handling can break internal circuit boards and fine mechanics.
- Do not use harsh chemicals, cleaning solvents, or strong detergents to clean the PenCam.

Important:

All jurisdictions have specific laws and regulations relating to the use of cameras and voice recorders. Before using any camera and/or voice recorder for any purpose it is the buyer's responsibility to be aware of all applicable laws and regulations that prohibit or limit the use of cameras and voice recorders, and to comply with the applicable laws and regulations.

PenCam Recorder

使用说明书



NIGHT VISION

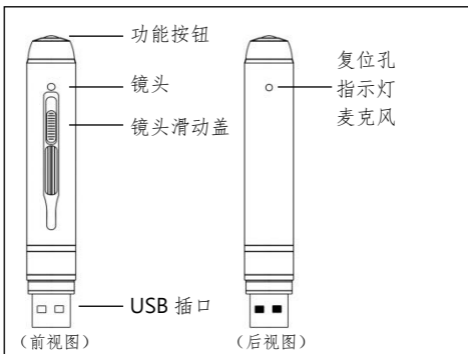
SUPER HD
2304x1296

H.264
MPEG-4/AVC

产品特点:

- 采用高清晰低照度摄像模组，明暗环境自动适应。专利夜视处理技术，使昏暗环境下的录像效果达至最佳。
- 超高清 2304x1296P 录像，帧速可达 30FPS；
- H. 264 视频压缩格式，节省存储空间。
- 内置 Micro SD 卡，最大可支持 128GB。
- 单键操作，简单快捷。
- 笔式设计，方便在会议记录、采访取证、户外活动等场合使用。
- USB 2.0 即插即用，方便与 PC/MAC 连接。

产品各部件名称:



操作说明:

1. 开机/关机

长按功能按钮约 2 秒，直到蓝灯亮起后松开，完成开机。接着绿灯闪烁数次后熄灭，自动开始录像。

在开机状态下，长按功能按钮约 2 秒，松开按钮，待指示灯熄灭即已关机。

2. 录像

每次开机时，录像笔会自动开始录像。

短按一下功能按钮，即可停止录像，绿灯快闪后转为蓝灯常亮，进入待机状态。

如需继续录像，请再次短按功能按钮。

长时间连续录像时，每 10 分钟会自动保存一个视频文件。

注意：录像时请把镜头滑动盖打开，露出镜头。

3. 照相

进入照相模式：在待机状态(蓝灯常亮)下，连续短按功能按钮 2 次，指示灯由蓝灯常亮转为蓝灯和绿灯交替闪烁，即已进入照相模式。

拍照：短按一下功能按钮，蓝灯快闪两次，完成一次拍照。

退出照相模式：再次连续短按功能按钮 2 次，返回待机状态(蓝灯常亮)。

4. 单独录音

进入录音模式：在待机状态(蓝灯常亮)下，连续短按功能按钮 3 次，指示灯由蓝灯常亮转为蓝灯闪烁数次后熄灭，自动开始录音。

再次短按功能按钮，停止录音，并返回待机状态(蓝灯常亮)。

5. 移动侦测监录

进入移动侦测模式：在待机状态(蓝灯常亮)下，连续短按功能按钮 4 次，指示灯由蓝灯常亮转为绿灯闪烁，即已进入移动侦测模式。当镜头前方有物像移动时，即自动开始录像，此时绿灯快闪。当镜头前方物像静止时，数秒后自动停止录像，绿灯变成慢闪。当磁盘空间满时，会自动删去最早监录的录像文件，以便保存新监录的录像文件。

短按功能按钮，停止监录，此时绿灯常亮。再次短按功能按钮，恢复侦测监录状态。

退出移动侦测模式：再次连续短按功能按钮 4 次，返

回待机状态(蓝灯常亮)。

6. 自动关机功能

在下列情况下，录像笔将自动关机：

(1) 当内置锂电电量不足时，蓝灯会连续闪烁数秒后，将保存视频，并自动关机；

(2) 当存储空间满时，蓝灯和绿灯同时闪烁数秒后，将保存视频，并自动关机；

(3) 当主机处于待机状态，2 分钟内没有任何操作，将自动关机，以节省电力。

7. 充电

本机内置可充电锂电池，可以通过以下方式充电：

(1) 把录像笔插入电脑 USB 口充电；

(2) 把录像笔连接到 DC 5V 充电器充电。

充电时，蓝灯闪烁，当内置锂电充满电时，蓝灯常亮。

注意：当电池电量不足时，蓝色指示灯会连续闪烁数秒，然后自动关机。此时请对本机进行充电。

8. 故障重置

当本机工作不正常时，可以尝试对本机进行复位重置，

以使本机恢复正常。具体实现方法是：用细杆从复位孔插入，按一下内置的复位按钮，即可实现一次重置操作。

9. 设置

把录像笔插入电脑 USB 口，数秒后电脑屏幕上将会弹出新增的可移动磁盘标识 REMOVABLE...。在其根目录下，有一个设置文件，名为 Setup.exe，双击运行该文件，电脑屏幕上会出现如下设置界面：



可以在上面设置日期时间、视频参数等，勾选完成后，点击左下角 **Create configuration file** 按钮保存设置。点击右下角 **Default Setting**，可恢复出厂设置。

把录像笔与电脑断开，重新开机，新修改的参数即生效。

注意事项:

- (1) 本产品在进行录像时,机体会有一定程度发热,这是正常的。为保证散热,请尽量使本产品在通风良好的环境下使用,勿在使用时包裹住本产品。
- (2) 请勿将产品置于潮湿的工作环境,产品不具备防水功能,请避免使本产品淋水或暴露在雨水中。

重要提醒:

本产品须合法使用。各司法管辖区对使用拍摄和录音设备有特定的法律和法规。无论出于何种目的,在使用任何拍摄和录音设备时使用者均有责任严格遵守相关法律法规,不得违反法律法规禁止或限制使用之规定。

产品规格:

镜头视角:	65°
最小照度:	0.1 Lux
视频格式:	MOV
视频压缩格式:	H.264 (高级版)
视频分辨率:	2304x1296 · 1920x1080 · 1280x720
视频帧速:	1296P/1080P @30fps 720P @30fps
照片格式:	JPG 4352x3264
存储:	Micro SD up to 128GB
USB 接口:	USB 2.0
充电电压:	DC 5V/500mA
电池容量:	380mAH
产品尺寸:	长度: 155mm 直径: 15mm
产品重量:	约 50 g

(上述参数系实验室测得的平均值, 以实物为准。)